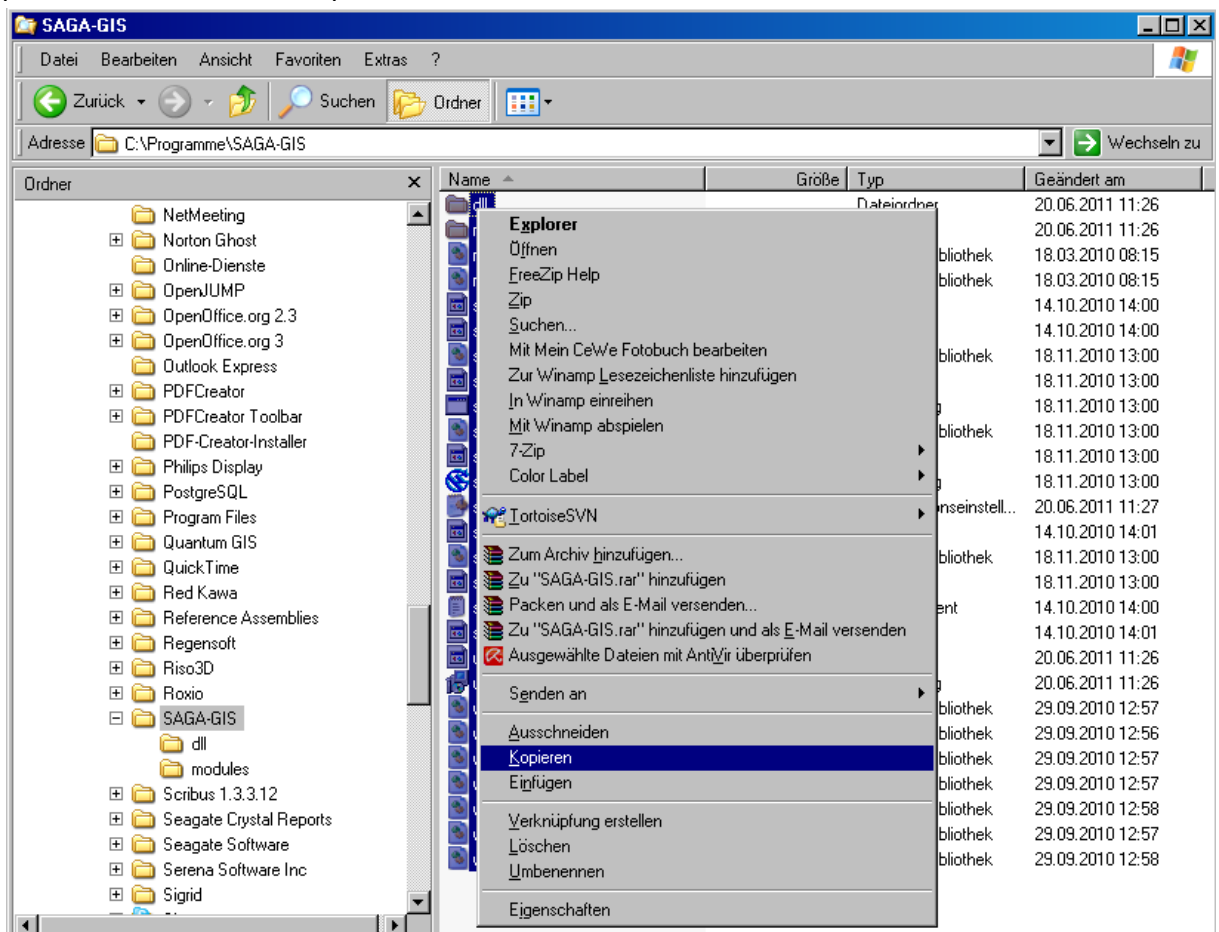
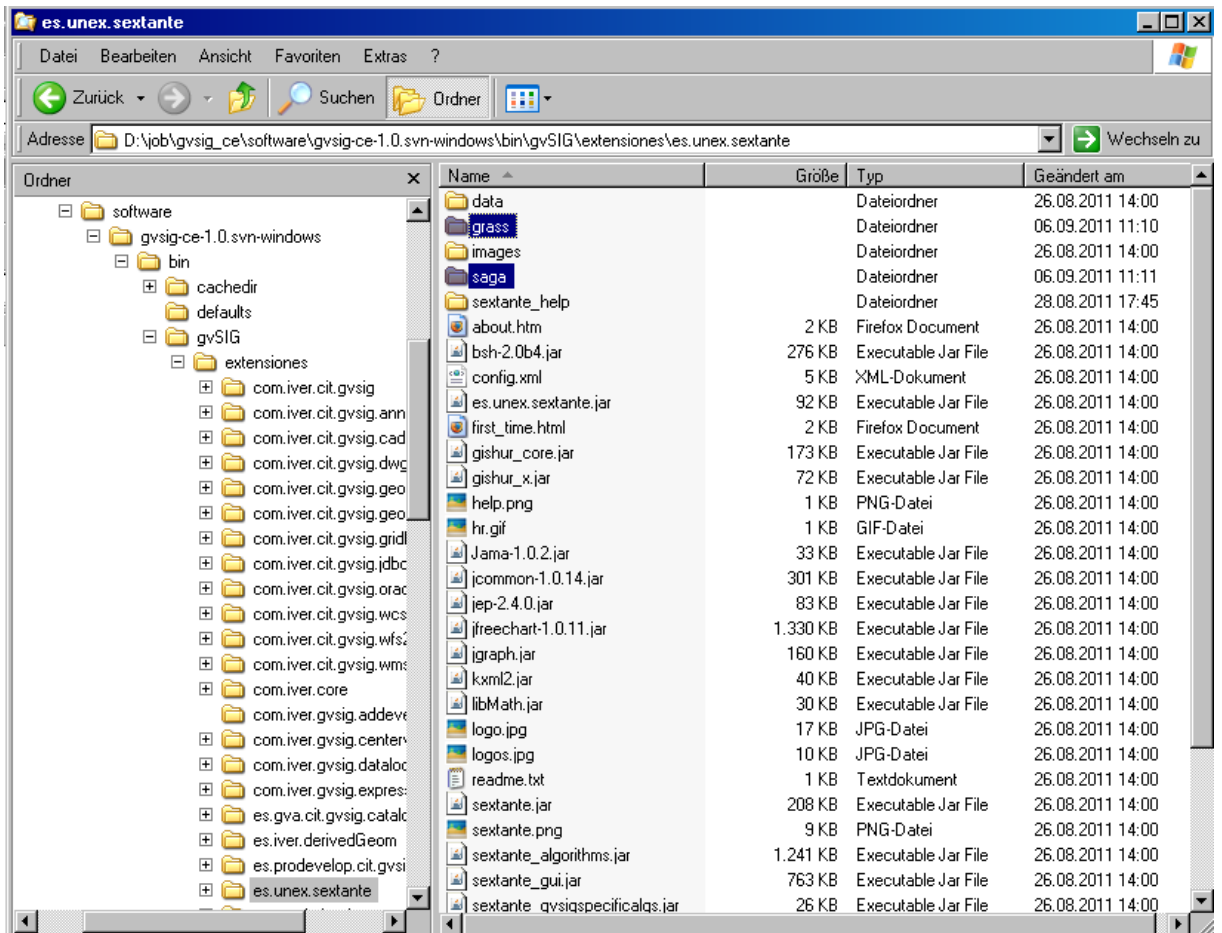


How to get ready with SAGA-GIS and GRASS GIS on the technical preview of gvSIG CE under Windows

1. Download the “tech-preview-1.0.0” of gvSIG CE from here:
<http://sourceforge.net/projects/gvsigce/files/tech-preview-1.0.0/>
2. Download and install GRASS-GIS and SAGA-GIS from the official websites:
 - <http://grass.fbk.eu/>
 - <http://www.saga-gis.org/en/index.html>
3. Copy the whole content of the installation directories into the prepared folders of the extensions directory “es.unex.sextante”, called “grass” and “saga” of the tech-preview-1.0.0, like in the picture seen here:





4. Start gvSIG CE from bin-directory (gvSIG.bat) and open the Sextante toolbox. In there you will see all the available raster- and vector tools from Sextante, SAGA-GIS, GRASS GIS and gvSIG CE which all together are currently 760 algorithms.
5. Example of calculating the shaded relief with SAGA-GIS “SAGA > Terrain Analysis – Lighting > Analytical Hillshading”:

